



UKSS Towers for HLLV Energia user manual

Yuri Kulchitsky
web-site www.kulch.spb.ru, e-mail postmaster@kulch.spb.ru

August 31, 2009

Disclaimer

This software is provided as it is without any warranty of any kind.

The project has been developed to be used as an add-on for Orbiter Space Flight Simulator by Martin Schweiger (www.orbiter-sim.com). Designed for Orbiter 2006 Edition, patch 1 (build 060929).

Introduction

UKSS Towers is an additional part of **ENERGY project** add-on. The first launch of Energia heavy rocket with Polyus spacecraft was from Launch Complex 250 (Baikonur). The another name of LC 250 is a Universal Launch and Testing Facility ("Universalniy Kompleks Start-Stend" or "UKSS" in russian transcription).



UKSS Towers are the service towers of LC 250.

Installation

Just follow the setup program instructions.

Requirements and limits

Be sure that *ScnEditor* module is activated at *Modules* tab in *Orbiter Launch pad* dialog. The *Scenario Editor* is required for configuring UKSS Towers.

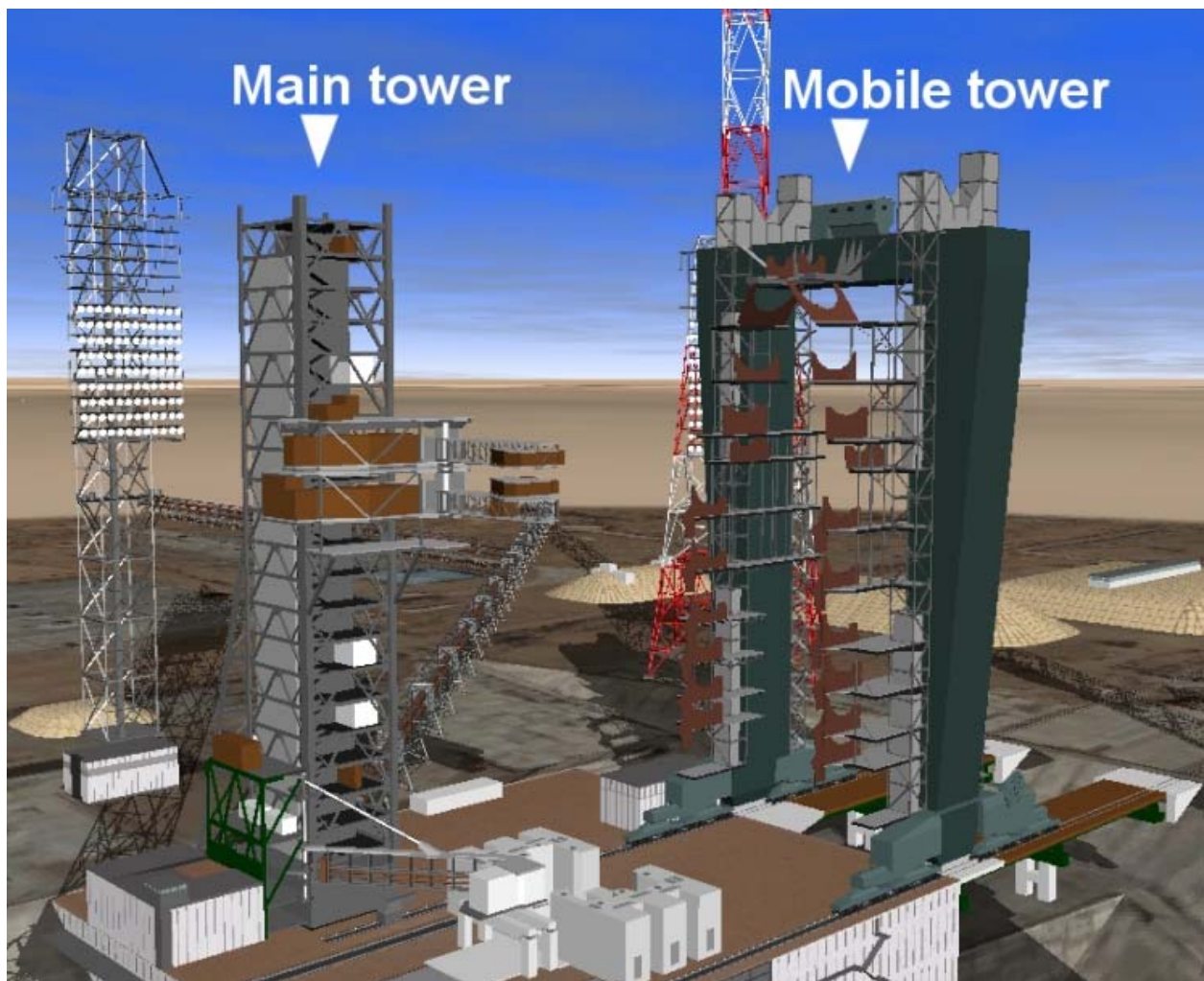
The current version is not full compatible with *Orbiters Flight recorder*.

Required add-on:

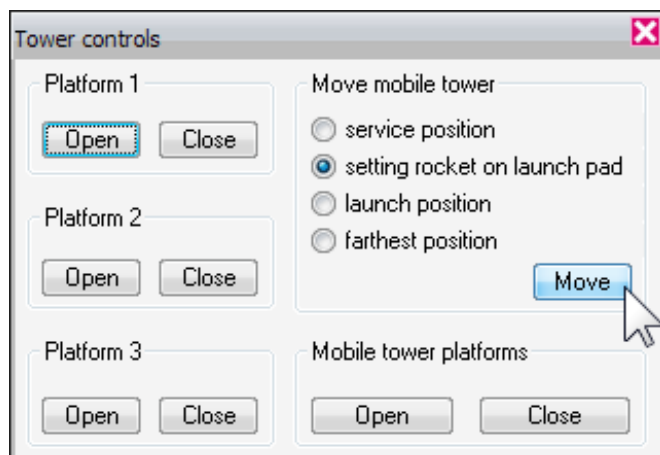
ENERGY project (Energia HLLV), see kulch.spb.ru/Eng/downloads.shtml or www.orbithangar.com/searchid.php?ID=1036.

Control dialog

This add-on includes two vessels – *Main tower* and *Mobile tower*.



Both towers are controlling via *Control dialog* of main tower, see picture:



To open Control dialog press **Ctrl**+space keys (make sure that control focus is on main tower, use **F3**-key to switch the control focus).

You can open or close service platforms of main tower by pressing of corresponding buttons. *Move mobile tower* section allows you to control movement of mobile tower along the rails. *Mobile tower platforms* section controls service platforms of mobile tower.

Keyboard interface

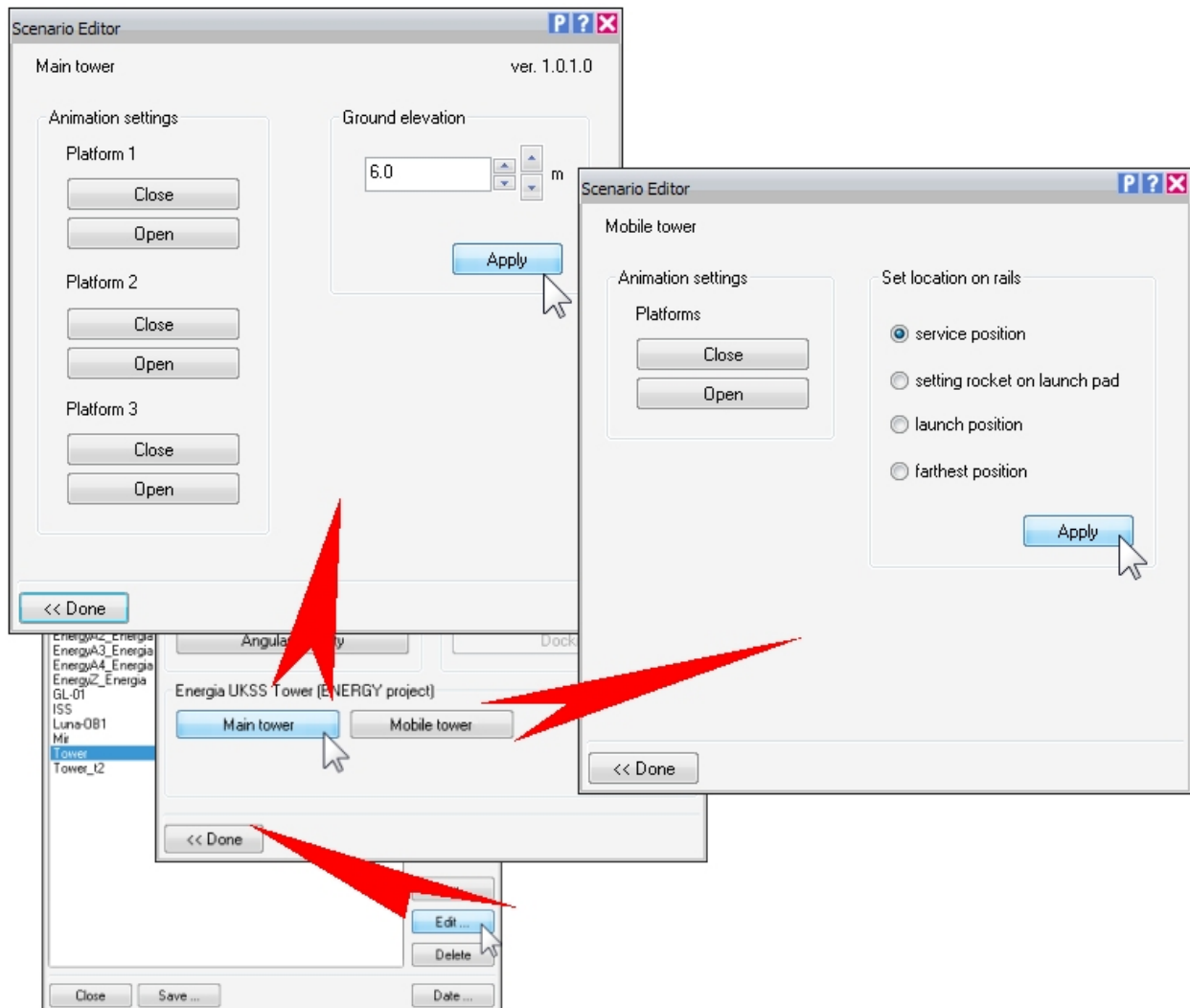
Ctrl+space **Open Control dialog***.

* - It is for main tower only. The mobile tower has no keyboard interface and you can't put control focus on it.

Configuring

UKSS Towers are compatible with Orbiter Scenario Editor (read more about Scenario Editor in [Doc\ScenarioEditor.pdf](#) manual). You can change some Tower settings using Scenario Editor.

Open Scenario Editor and select the *Energia service tower* vessel (*Tower* for example, see picture). Click the *Edit...* button:



1. Main tower

In *Animation settings* section you can open or close the tower's platforms (separately). *Ground elevation* box allows you to define the tower elevation above the ground level (maximum value is 52 m).

2. Mobile tower

In *Animation settings* section you can open or close the tower's platforms. *Set location on rails* selector allows you to move the mobile tower to one of four positions.